

# Scale Types

Major/Ionian



4 Natural Minor/Aeolian



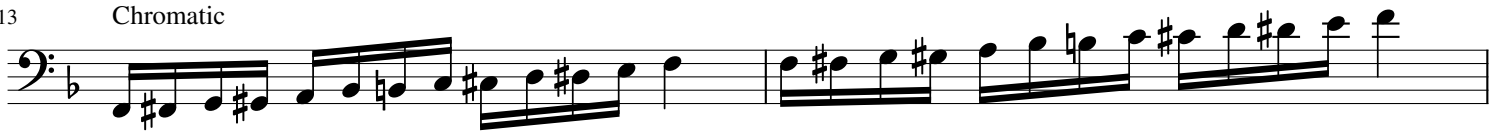
7 Harmonic Minor



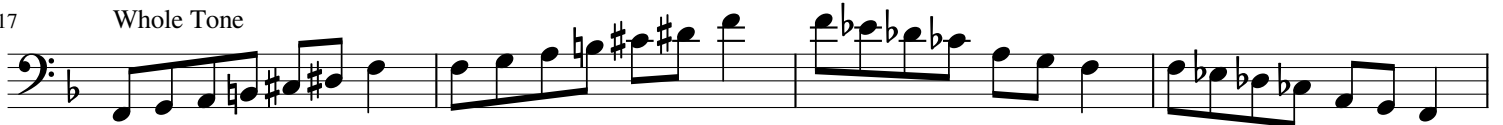
10 Melodic Minor



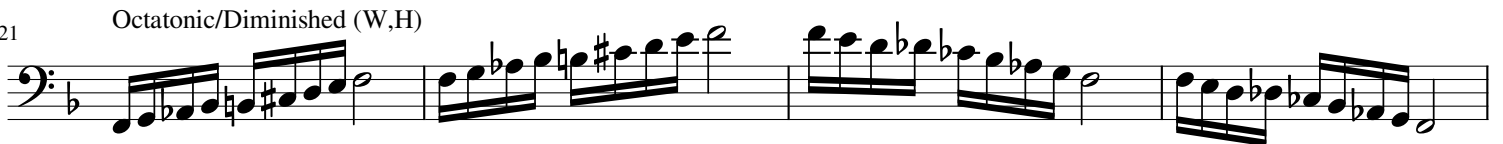
13 Chromatic



17 Whole Tone



21 Octatonic/Diminished (W,H)



25 Octatonic/Diminished (H,W)



29 Augmented Scale/Minor-third Half-step Scale



Major Pentatonic

33

5

5

5

5

Detailed description: This block shows the first four measures of a Major Pentatonic scale in bass clef. The key signature has one flat (B-flat). The notes are G2, A2, B2, C3, D3. The first measure starts with a '5' above the G2 note. The second and third measures have a '5' below the C3 note. The fourth measure has a '5' above the D3 note. Each measure ends with a quarter rest. The piece concludes with a double bar line and a key signature change to two flats (B-flat, E-flat).

Minor Pentatonic

37

5

5

5

5

Detailed description: This block shows the first four measures of a Minor Pentatonic scale in bass clef. The key signature has two flats (B-flat, E-flat). The notes are G2, A2, B-flat2, C3, D3. The first measure starts with a '5' above the G2 note. The second and third measures have a '5' below the C3 note. The fourth measure has a '5' above the D3 note. Each measure ends with a quarter rest. The piece concludes with a double bar line and a key signature change to three flats (B-flat, E-flat, A-flat).

Blues

41

Detailed description: This block shows the first four measures of a Blues scale in bass clef. The key signature has three flats (B-flat, E-flat, A-flat). The notes are G2, A2, B-flat2, C3, D3, E-flat3. The first measure starts with a quarter note G2. The second and third measures have a quarter note B-flat2. The fourth measure has a quarter note E-flat3. Each measure ends with a quarter rest. The piece concludes with a double bar line and a key signature change to two flats (B-flat, E-flat).

Lydian

45

Detailed description: This block shows the first three measures of a Lydian scale in bass clef. The key signature has two flats (B-flat, E-flat). The notes are G2, A2, B-flat2, C3, D3, E-flat3, F3. The first measure starts with a quarter note G2. The second and third measures have a quarter note B-flat2. Each measure ends with a quarter rest. The piece concludes with a double bar line and a key signature change to one flat (B-flat).

Mixolydian

48

Detailed description: This block shows the first three measures of a Mixolydian scale in bass clef. The key signature has one flat (B-flat). The notes are G2, A2, B2, C3, D3, E-flat3, F3. The first measure starts with a quarter note G2. The second and third measures have a quarter note B2. Each measure ends with a quarter rest. The piece concludes with a double bar line and a key signature change to no flats (C major).

Dorian

51

Detailed description: This block shows the first three measures of a Dorian scale in bass clef. The key signature has two flats (B-flat, E-flat). The notes are G2, A2, B-flat2, C3, D3, E-flat3, F3. The first measure starts with a quarter note G2. The second and third measures have a quarter note B-flat2. Each measure ends with a quarter rest. The piece concludes with a double bar line and a key signature change to one flat (B-flat).

Phrygian

54

Detailed description: This block shows the first three measures of a Phrygian scale in bass clef. The key signature has three flats (B-flat, E-flat, A-flat). The notes are G2, A2, B-flat2, C3, D3, E-flat3, F3. The first measure starts with a quarter note G2. The second and third measures have a quarter note B-flat2. Each measure ends with a quarter rest. The piece concludes with a double bar line and a key signature change to two flats (B-flat, E-flat).

Locrian

57

Detailed description: This block shows the first three measures of a Locrian scale in bass clef. The key signature has four flats (B-flat, E-flat, A-flat, D-flat). The notes are G2, A2, B-flat2, C3, D3, E-flat3, F3. The first measure starts with a quarter note G2. The second and third measures have a quarter note B-flat2. Each measure ends with a quarter rest. The piece concludes with a double bar line and a key signature change to three flats (B-flat, E-flat, A-flat).